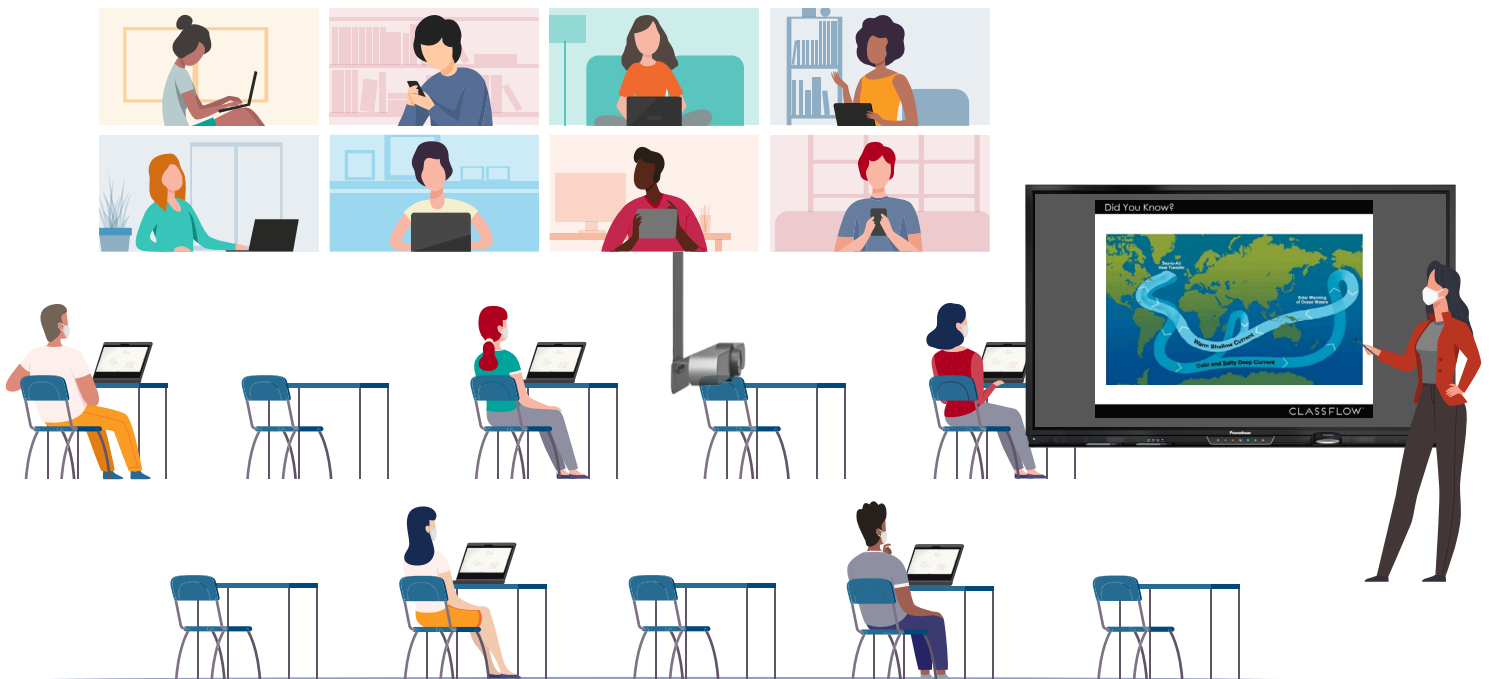


## Learning Beyond the Classroom: A Hybrid Guide

New and still-evolving health and safety guidelines for schools require teachers, administrators, and IT directors to quickly transform educational settings to adapt to a new normal. While solutions may vary from school to school, the goal will be the same: to provide high-quality education for millions of students despite unprecedented circumstances.

To ensure learning continues for students, teachers will be required to reimagine the classroom, with technology that delivers lessons simultaneously, in real time, for both students who attend class in person, and for those connected remotely using their devices.



# What You'll Need

## ActivPanel Elements Series

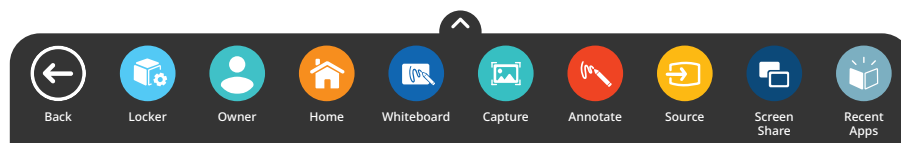
The Promethean Interactive Panel



### Purposefully Designed for the Classroom

The ActivPanel Elements Series continues Promethean's tradition of developing purpose-built products that are designed by teachers, for teachers.

Thoughtfully crafted from the ground up, the ActivPanel Elements Series is based on extensive user research to deliver innovation and ease-of-use that matters to teachers, students, and administrators.



### A Simplified and Unified User Experience

The ActivPanel Elements series features a revolutionary user interface that places all of the most commonly used tools right at teachers' fingertips and within natural line of sight.

### Vellum™ Writing and Touch Technology

Promethean's Vellum™ writing technology delivers the industry's most natural writing experience. Free from the disruptions of script lag and false strokes, Vellum technology creates a smooth pen-on-paper writing performance, enabling teachers and students to interact instinctively.

The writing is fast and accurate and works just as expected. Pens write, fingers touch, and palms erase – it's like writing on a dry erase whiteboard, only better.

## Classroom Essential Apps for New Ways to Engage

The ActivPanel comes preloaded with Classroom Essential Apps – all available at the touch of a button.

Use the infinite canvas on the highly intuitive Whiteboard app to instantly supplement lessons.

Draw, highlight, and annotate over any content from any source.

Quickly screen capture content, crop, and open it within the Whiteboard app for further discussion.

Add excitement to any lesson or activity with the customizable Spinner and Timer apps.

## Mirror and Share Work with the Classroom

The ActivPanel Elements series' controlled, multi-device mirroring lets teachers move freely and teach from anywhere in the classroom. During a lesson, the teacher can interact with mirrored screens directly from the panel, increasing student collaboration and participation.

Wirelessly share up to four devices screens at once

Easily connect using a six-digit code

Teachers can interact with shared screens directly from the ActivPanel

Robust teacher controls for enhanced security



## ClassFlow

Cloud-Based Lesson Delivery Software with Advanced Collaboration Tools

Send instant polls, activities, and assessments to student devices

Create student accounts to send lessons and assignments

Access millions of resources from educators around the world

Anywhere, anytime access in school, at home, or on the go



## ActivInspire

Known and Loved by Educators for Lesson Delivery

Utilize creation tools like math, clock, recorder, camera, and revealer tools

Customize lessons using different modes for young or older students

Access to over 30,000 free Flipcharts in the myPromethean Resource Library

# Other Elements of the Hybrid Classroom



## Computer

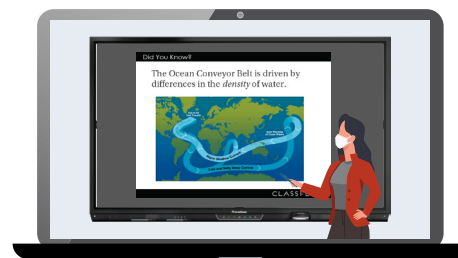
Promethean offers Chrome OS, Android, and Windows compatibility, so schools can choose the computer operating system that works best for their IT ecosystem.

## Multi-Device Mirroring

Promethean's Screen Share application, integrated in the ActivPanel Elements Series, allows you to duplicate and control student devices and collaborate from anywhere.

## High-Speed Internet Connection

A high-speed Internet connection is essential to ensure that the Screen Share collaboration and video conferencing tools work smoothly.



## Video Conference Software

Use videoconference software with robust security settings that enables communication from any device. Promethean is compatible with all of them.

## Camera

The choice of camera depends on the size and layout of your classroom. Install the camera from the ceiling of the classroom or at a certain height on the wall or stand in front of the panel, so that the teacher is framed alongside the interactive panel.

# Protecting the Health of Teachers and Students



## Safe Screen Interactions

Promethean ActivPanel Elements Series panels allow for interaction with both pen and finger. At a time when personal protection is of utmost importance, we recommend that you do not touch the screen glass with fingers or hands but instead interact with the panel surface using the pens and erasers that are included with the panel (depending on model). Ideally, each teacher and each student will have their own personal and non-transferable pen. Check with your Promethean partner about the availability of extra pens.

## Cleaning and Disinfecting Screens

For information on how to clean your ActivPanel, please refer to the Promethean customer support website: [www.support.prometheanworld.com](http://www.support.prometheanworld.com).

## Tools for Hybrid and Remote Learning

Discover free training and teaching resources to help you easily integrate Promethean interactive displays and lesson delivery software into your classroom, as well as learning about the latest sessions and tools developed for hybrid and remote learning. The Promethean Professional Development Team offers a wide range of consultation services to help educators effectively implement immersive technologies that transform learning environments and support student achievement. Find out more at

[www.blog.prometheanworld.com/learn-promethean](http://www.blog.prometheanworld.com/learn-promethean).

## About

# Promethean®

Collaborative discovery is at the heart of the learning experience. With more than two decades helping people learn and grow together, Promethean is a true partner for educators, innovators, and business leaders. Our award-winning interactive displays and lesson delivery solutions transform learning and work spaces into creative, connected environments to foster collective success. At the heart of Promethean's partnership with you is a global team of education strategists, designers, technologists, and support staff. We view each partnership as a long-term investment - we will be here to support you no matter what.



Learn More at

<https://www.prometheanworld.com/hybrid-learning>